

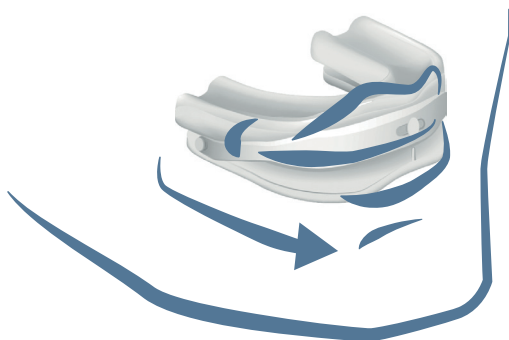
Mandibular advancement device in 2 different sizes

somnipax guard standard

(for standard size jaws)

somnipax guard large

(for large jaws)



Snoring mouth guard that prevents simple snoring and night-time breathing stops

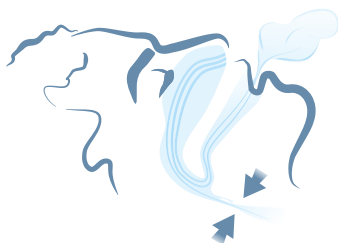
Mandibular advancement device for use with positional obstructive sleep apnoea (OSA) and tongue base snoring

- **Very comfortable:** thanks to the pleasantly soft material and a reduced-volume design meaning that the material is barely felt in the mouth.
- **Optimal fit:** two sizes (standard/large) to choose from, each mouth guard is individually adjusted to the user's jaw.
- **Very flexible:** precisely adjustable protrusion for minimal strain on the jaw.
- **Ready to use immediately:** adjusted at the practice and can be taken straight home and used straight away by the patient.

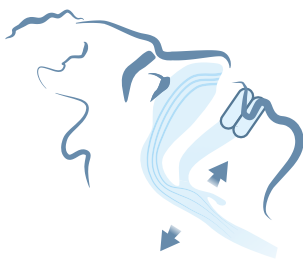
How does a mandibular advancement device („snoring mouth guard“) work?

Snoring noises, but also night-time breathing stops („apnoea“), occur when the tissue in the upper airways relaxes and goes limp while sleeping.

A lot of the time, this relaxation causes the tongue to drop backwards into the throat during sleep, where it can constrict or even temporarily close off the airways. Air turbulence and vibrations then occur at the constriction point, and this is what causes the snoring noise. If the airways are completely closed off, this causes breathing stops.



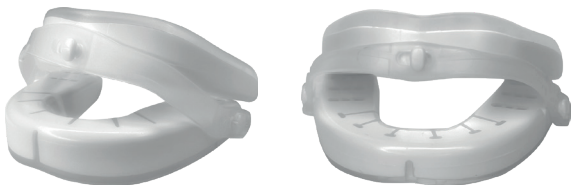
A mandibular advancement device like somnipax guard (standard/large) is a very effective way of preventing the tongue from dropping back into the throat during sleep.



How does it do this? The mouth guard moves the lower jaw a few millimetres forwards, thereby applying a slight tension to the tongue muscle. This slight tension means that the tongue muscle is no longer able to drop backwards into the throat. The airways remain free, and you will be able to sleep without any dangerous breathing interruptions or annoying snoring noise.

These are the somnipax guard standard and somnipax guard large mouth guards

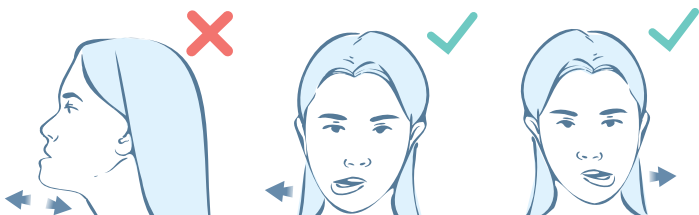
Both mouth guards have an identical design, but differ in terms of the size and (to a small extent) the adjustable protrusion.



The upper jaw section is adapted to the shape of the top row of teeth, and the lower jaw section to the bottom row of teeth.

Connection via the bands

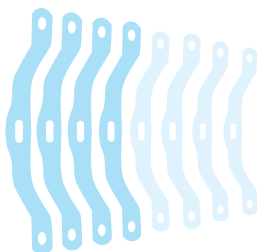
The two sections of the mouth guard (top/bottom) are connected to one another via a plastic protrusion band. This helps maintain the protrusion while still allowing the lower jaw to move to the sides and making it possible to slightly open the jaw.



The protrusion can be regulated using the different length bands of the somnipax guard mouth guards (standard/large):

somnipax guard standard: from a neutral jaw position (0 mm) up to a protrusion of 12 mm.

somnipax guard large: from a negative jaw position (-1 mm) up to a protrusion of 9.5 mm.



Here's how the somnipax guard mouth guards (standard/large) are adjusted



Your physician will hold a medical history consultation with you to establish whether mouth guard therapy is a suitable option for you.

Mouth guard therapy may not be suitable if the following issues are present:

- Removable dentures or poorly adhering dentures;
- Jaw pain;
- Gingival atrophy or tooth loosening;
- Fewer than 10 teeth per jaw;
- Not suitable for use by persons under 18 years of age.

The final decision as to whether a mouth guard could work for you will however be made by your attending physician.

The mouth guard is adjusted right there at the medical practice. The physician starts by working out your jaw size using the measurement template, and then selects the most suitable mouth guard size (standard/large).



The upper jaw section is then adjusted to the teeth in your upper jaw, and the process then repeated for the lower jaw section. The physician then sets the correct protrusion for you, and the mouth guard is ready to use.

The pre-fabricated components and state-of-the-art materials mean that the adjustment process only takes a few minutes, and the mouth guard is then ready to use immediately. Your physician will arrange any further follow-up appointments with you.

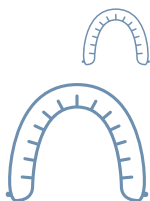
The benefits of the somnipax guard mouth guards (standard/large) at a glance:



Barely any material felt in the mouth: the natural opening of the jaw at rest is approx. 4 mm; wearing the somnipax guard standard or large keeps the jaw opening at around 6 mm - you'll barely feel the bite height of the mouth guard!



Tested materials and guaranteed freedom from harmful substances: somnipax guard standard and large are made to very strict requirements in Switzerland. All constituents are biocompatible and free from harmful substances.



Optimal fit. Extremely fast process: Your physician will use the measurement template to work out which mouth guard is right for your jaw (standard - for normal-sized jaws/large - for large jaws), and will carry out the adjustment right then and there. A very simple process that takes just a few minutes in total.



One mouth guard that covers a range of applications: the protrusion of the mouth guard can be individually adjusted via the different band lengths. Your physician will define the required protrusion and you can adjust the mouth guard yourself very easily.



Sustainability and cost efficiency in practice: there are spare parts for all components of the somnipax guard standard and large. Guaranteed.



Ready for use immediately: As soon as your mouth guard has been adjusted by the physician, you can take it home and start the therapy straight away.

somnipax guard mouth guards: High-tech products for your health



«These products are the result of many years of development, as well as close collaboration between medics, engineers and manufacturing technicians. The mouth guards combine Swiss precision with state-of-the-art high-performance medical plastics.»

DR. HANNES WAKONIG

Managing Director of AescuBrands,
Manufacturer of somnipax mouth guards



«My night-time breathing stops have almost completely disappeared thanks to the somnipax guard standard.»

HANS K., HERZOGENAURACH

If you suffer from snoring or night-time breathing stops, speak to your physician about the somnipax guard mouth guards (standard/large). They will work with you to assess whether mouth guard therapy is suitable for you.

Your contact partner:

Physician's stamp

Publisher: AescuBrands UG (limited liability),
Im Gewerbegebiet 5, 91093 Heßdorf, Germany

As at: 17.06.2024